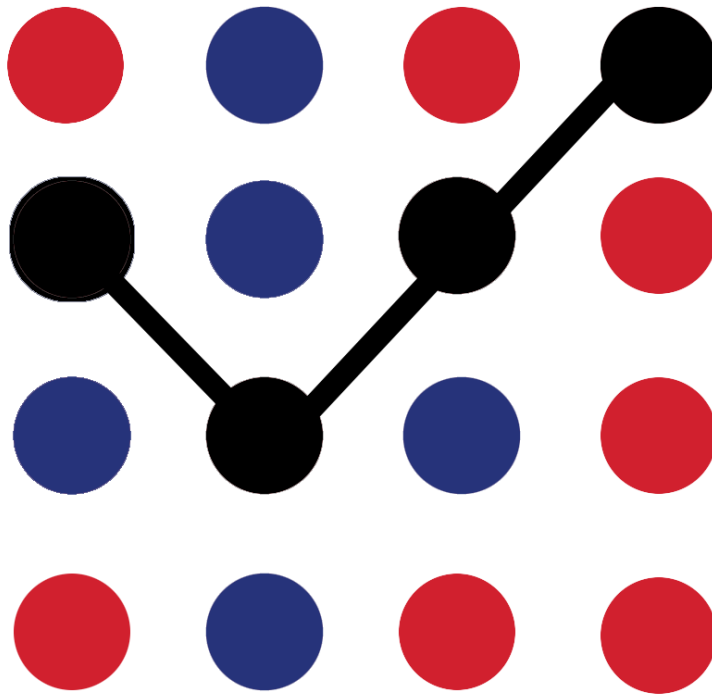


ASSESSMENT & SYSTEM PERFORMANCE



Results in aggregate are posted to
MyCDASchools > Assessments and on the District
Website > www.cdaschools.org > Assessments



ASSESSMENT & SYSTEM PERFORMANCE



i-Ready®

Results in aggregate are posted to MyCDASchools >
Assessments and on the District Website >
www.cdaschools.org > Assessments

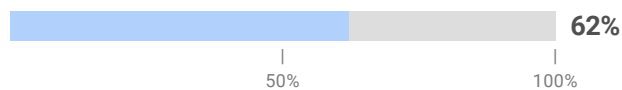
Diagnostic Growth

School
Subject
Academic Year
Comparison Diagnostic

All Schools
Math
2021 - 2022
Most Recent

Students Assessed/Total: **4,360/4,595**

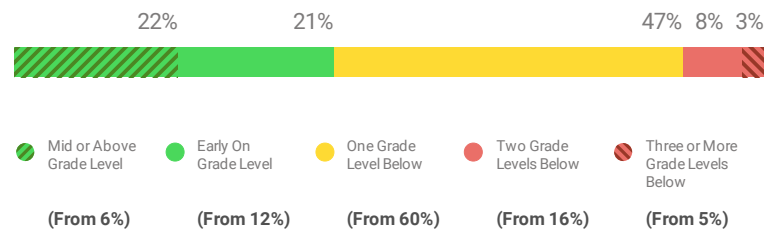
Progress to Annual Typical Growth (Median)



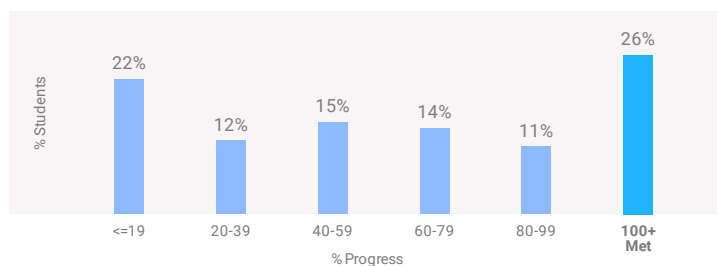
The median percent progress towards Typical Growth for this school is 62%. Typical Growth is the average annual growth for a student at their grade and baseline placement level.

[Learn More About Growth](#)

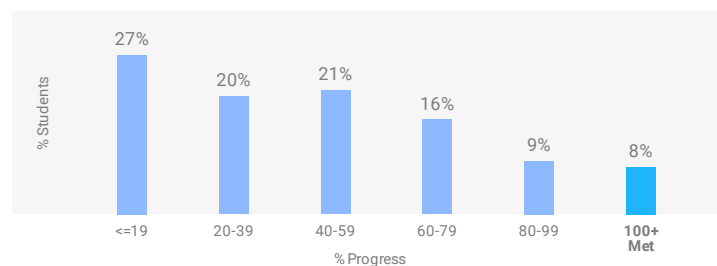
Current Placement Distribution



Distribution of Progress to Annual Typical Growth



Distribution of Progress to Annual Stretch Growth®



Show Results By

Grade

Showing 6 of 6

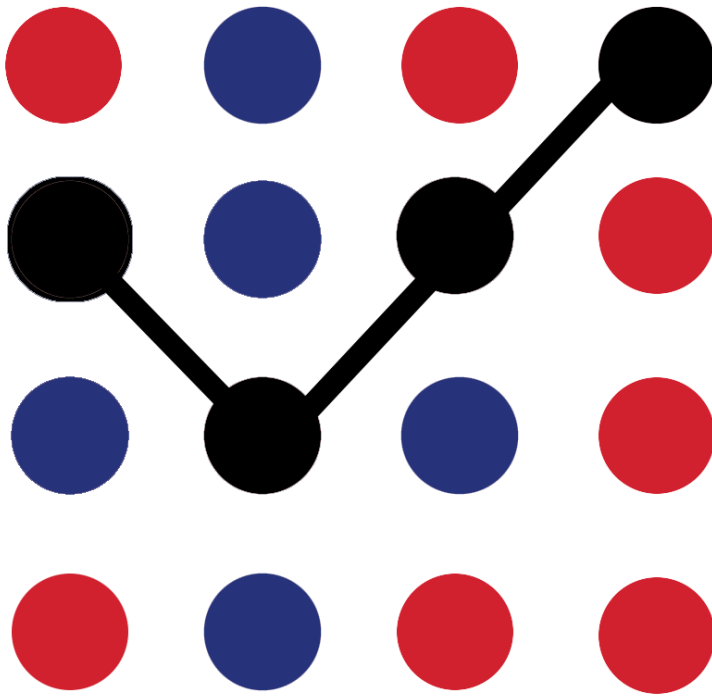
Grade	Annual Typical Growth		Annual Stretch Growth®		% Students with Improved Placement	Students Assessed/Total
	Progress (Median)	% Met	Progress (Median)	% Met		
Grade K	67%	25%	51%	12%	46%	641/685
Grade 1	71%	28%	51%	12%	44%	725/768
Grade 2	68%	27%	44%	10%	45%	732/763
Grade 3	54%	21%	38%	5%	50%	759/789
Grade 4	52%	22%	34%	4%	50%	748/797

Diagnostic Growth



School All Schools
Subject Math
Academic Year 2021 - 2022
Comparison Diagnostic Most Recent

Grade	Annual Typical Growth		Annual Stretch Growth®		% Students with Improved Placement	Students Assessed/Total
	Progress (Median)	% Met	Progress (Median)	% Met		
Grade 5	<div><div></div></div> 64%	34%	<div><div></div></div> 38%	8%	52%	755/793



ASSESSMENT & SYSTEM PERFORMANCE



Istation

Results in aggregate are posted to MyCDASchools >

Assessments and on the District Website >

www.cdaschools.org > Assessments

Executive Summary

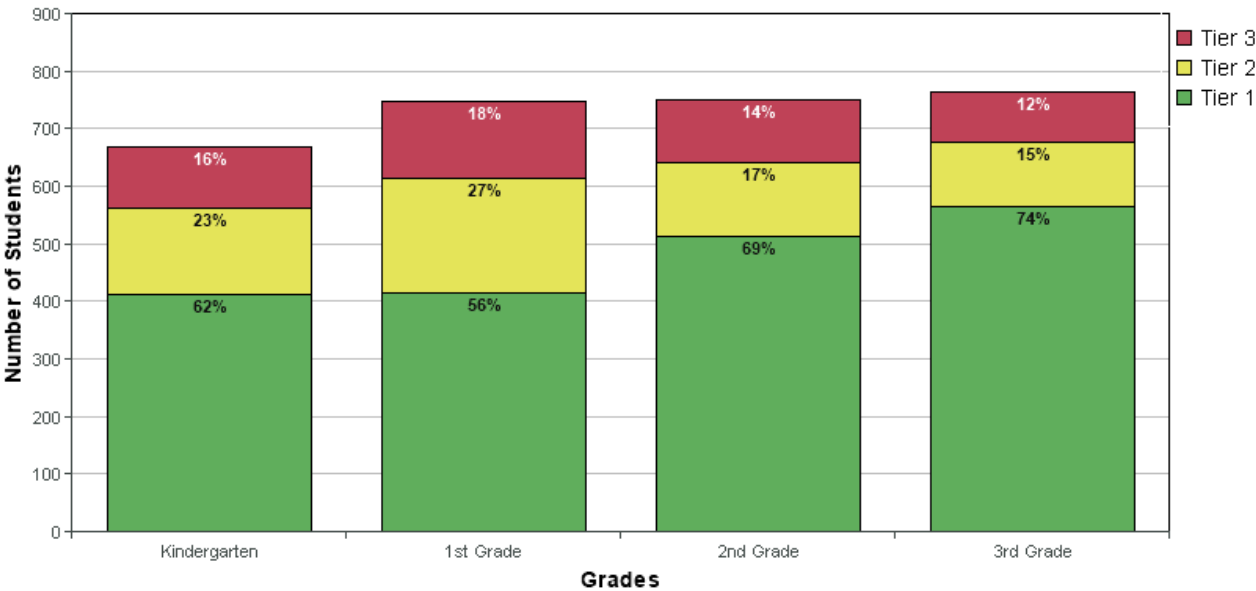
in January for Coeur d'Alene Public Schools

School Year 2021/2022
as of Sat Feb 05 2022 04:49:39 PM (-08:00)



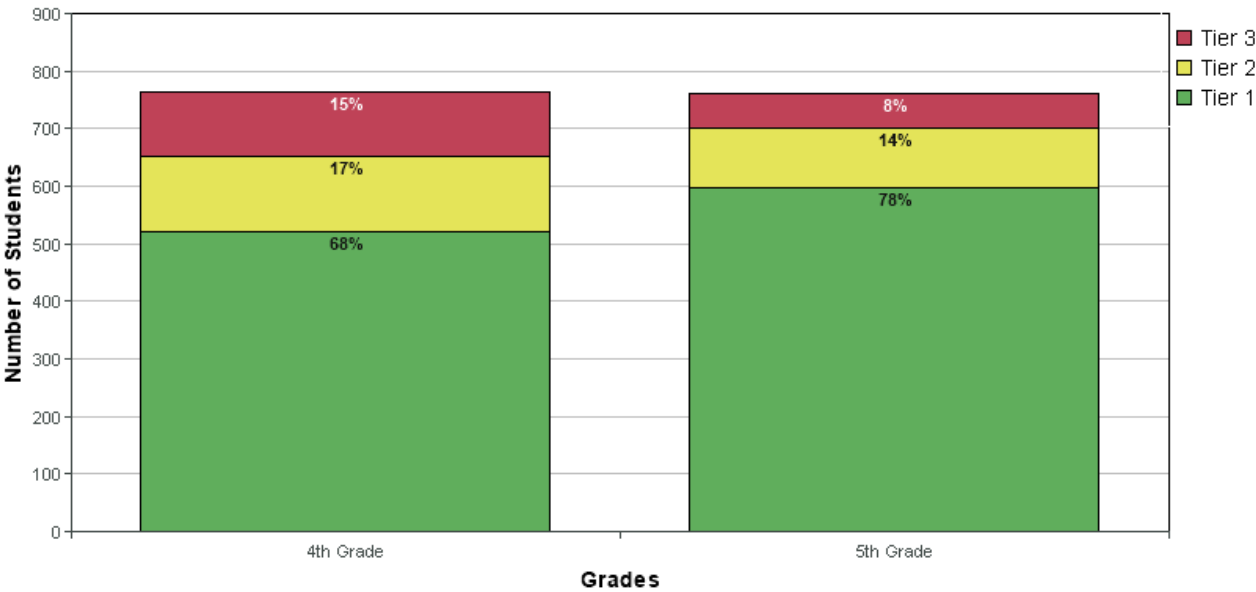
Below you will find ISIP™ data from **Coeur d'Alene Public Schools** that has been collected for **January**. The students' score is used as the dividing line to determine students potentially at risk.

ISIP Early Reading Summary (January 2022)



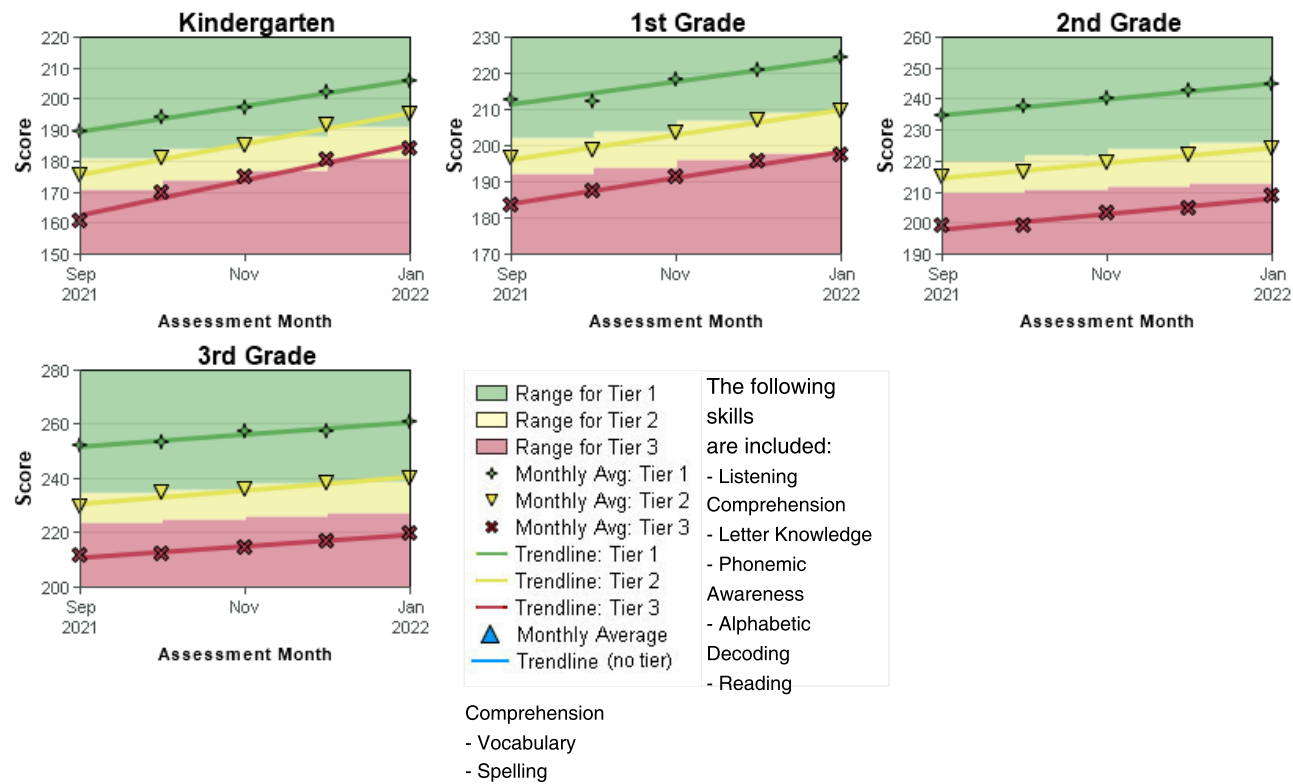
Total number of students who have been assessed using ISIP Early Reading in January: 2927

ISIP Advanced Reading Summary (January 2022)

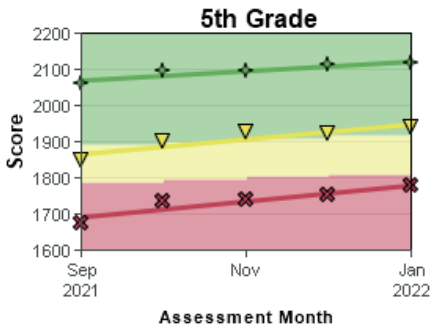
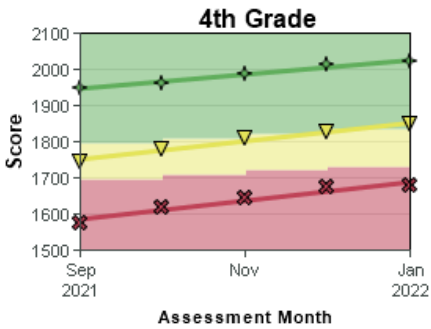


Total number of students who have been assessed using ISIP Advanced Reading in January: 1525

ISIP Early Reading - Skill Growth by Tier - Overall Reading



ISIP Advanced Reading - Skill Growth by Tier - Overall Reading



Range for Tier 1

Range for Tier 2

Range for Tier 3

Monthly Avg: Tier 1

Monthly Avg: Tier 2

Monthly Avg: Tier 3

Trendline: Tier 1

Trendline: Tier 2

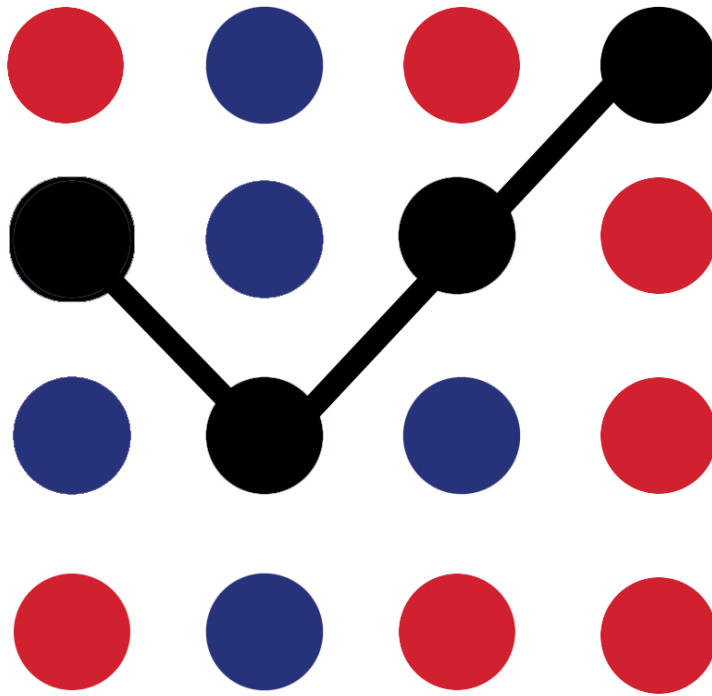
Trendline: Tier 3

Monthly Average

Trendline (no tier)

The following skills are included:

- Reading Comprehension
- Word Analysis
- Vocabulary

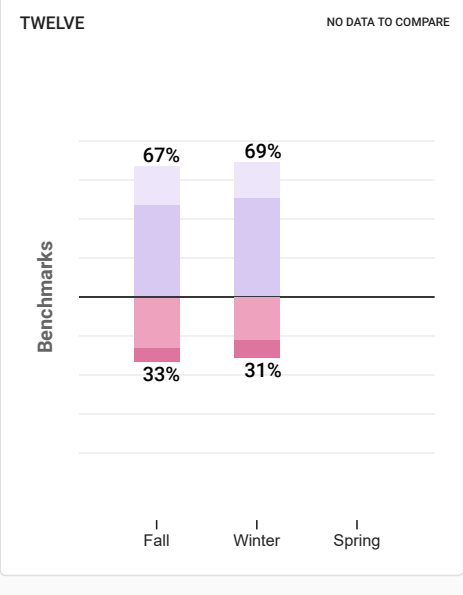
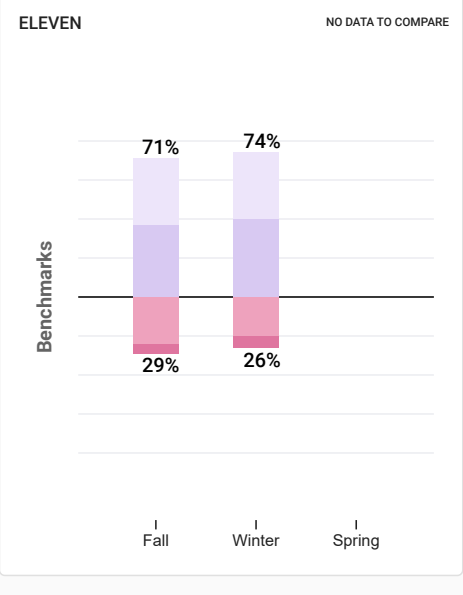
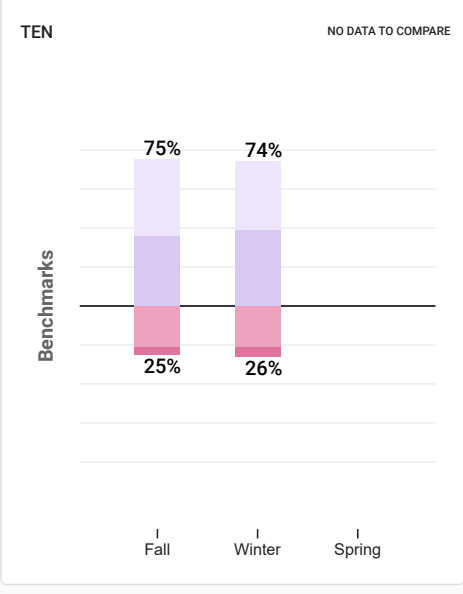
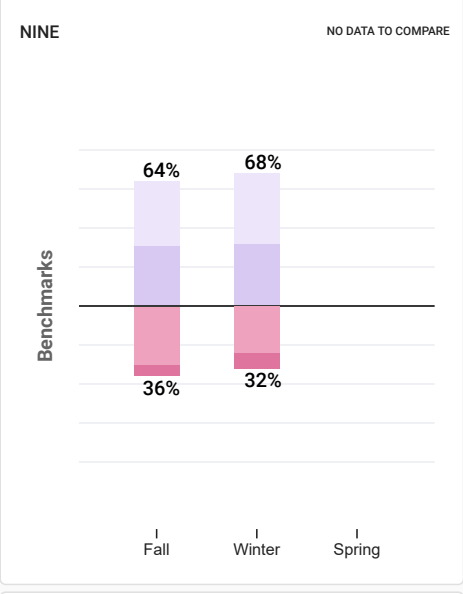
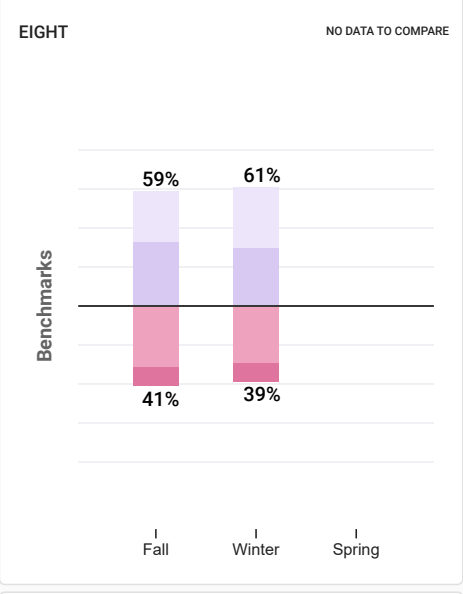
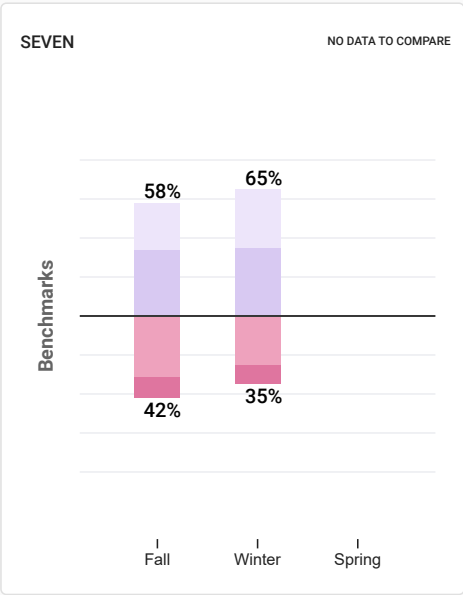
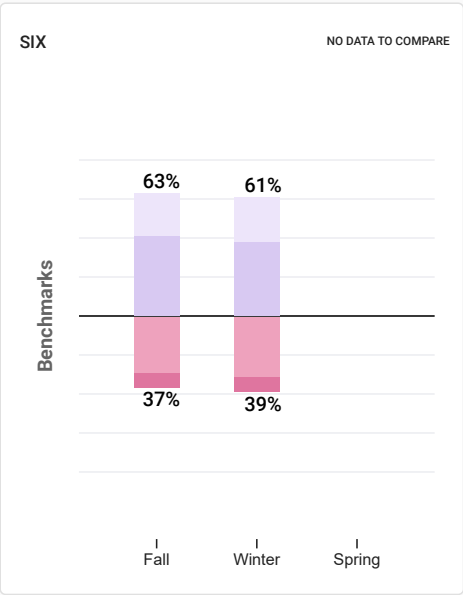
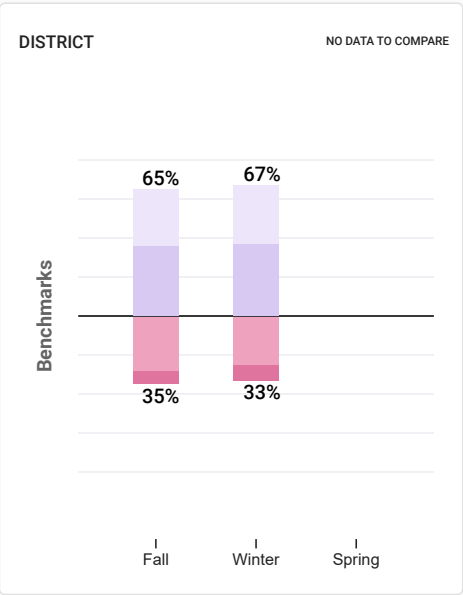


ASSESSMENT & SYSTEM PERFORMANCE

FastBridge
Learning
POWERED BY



Results in aggregate are posted to MyCDASchools >
Assessments and on the District Website >
www.cdaschools.org > Assessments

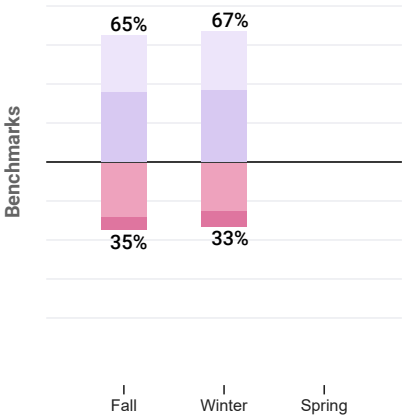


Group of Students	Benchmark	Fall 2021		Winter 2021		Spring 2021		Change of Students	
		%	Students	%	Students	%	Students		
District	COLLEGE_PATHWAY	29	1266	30	1382	0	0	-29%	-1266
	LOW_RISK	36	1566	37	1661	0	0	-36%	-1566
	SOME_RISK	28	1194	25	1133	0	0	-28%	-1194
	HIGH_RISK	7	319	8	353	0	0	-7%	-319
Six	COLLEGE_PATHWAY	22	150	23	163	0	0	-22%	-150
	LOW_RISK	41	273	38	271	0	0	-41%	-273
	SOME_RISK	29	192	31	221	0	0	-29%	-192
	HIGH_RISK	8	51	8	54	0	0	-8%	-51
Seven	COLLEGE_PATHWAY	24	160	30	200	0	0	-24%	-160
	LOW_RISK	34	224	35	239	0	0	-34%	-224
	SOME_RISK	31	201	25	169	0	0	-31%	-201
	HIGH_RISK	11	74	10	67	0	0	-11%	-74
Eight	COLLEGE_PATHWAY	26	169	31	223	0	0	-26%	-169
	LOW_RISK	33	220	30	219	0	0	-33%	-220
	SOME_RISK	31	201	29	210	0	0	-31%	-201
	HIGH_RISK	10	68	10	73	0	0	-10%	-68
Nine	COLLEGE_PATHWAY	33	256	36	292	0	0	-33%	-256
	LOW_RISK	31	243	32	255	0	0	-31%	-243
	SOME_RISK	30	235	24	195	0	0	-30%	-235
	HIGH_RISK	6	50	8	64	0	0	-6%	-50
Ten	COLLEGE_PATHWAY	39	275	35	249	0	0	-39%	-275
	LOW_RISK	36	251	39	272	0	0	-36%	-251
	SOME_RISK	21	148	21	151	0	0	-21%	-148
	HIGH_RISK	4	24	5	32	0	0	-4%	-24

Group of Students	Benchmark	Fall 2021		Winter 2021		Spring 2021		Change of Students	
		%	Students	%	Students	%	Students		
Eleven	COLLEGE_PATHWAY	34	191	34	186	0	0	-34%	-191
	LOW_RISK	37	204	40	218	0	0	-37%	-204
	SOME_RISK	24	132	20	107	0	0	-24%	-132
	HIGH_RISK	5	30	6	30	0	0	-5%	-30
Twelve	COLLEGE_PATHWAY	20	64	18	68	0	0	-20%	-64
	LOW_RISK	47	151	51	187	0	0	-47%	-151
	SOME_RISK	26	85	22	80	0	0	-26%	-85
	HIGH_RISK	7	22	9	33	0	0	-7%	-22

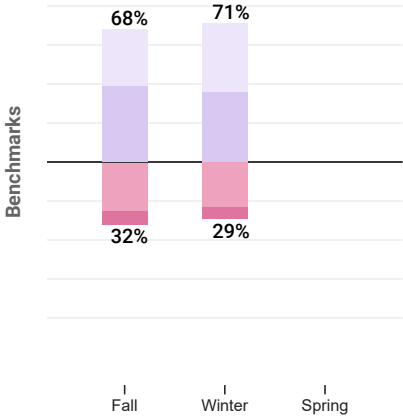
DISTRICT

NO DATA TO COMPARE



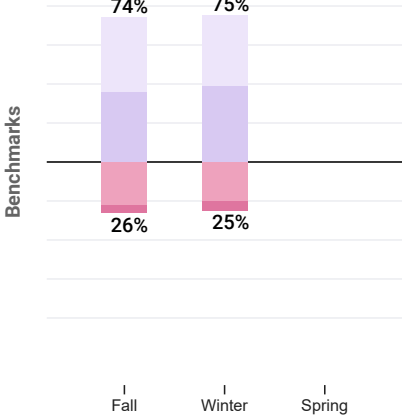
CANFIELD MIDDLE SCHOOL

NO DATA TO COMPARE



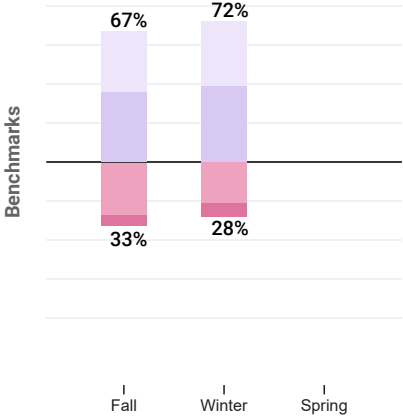
COEUR D'ALENE HIGH SCHOOL

NO DATA TO COMPARE



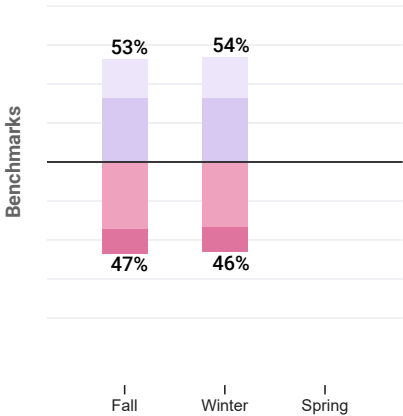
LAKE CITY HIGH SCHOOL

NO DATA TO COMPARE



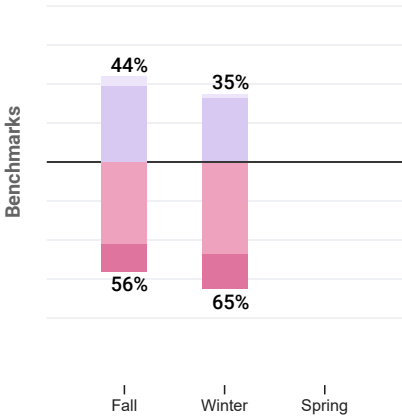
LAKES MIDDLE SCHOOL

NO DATA TO COMPARE



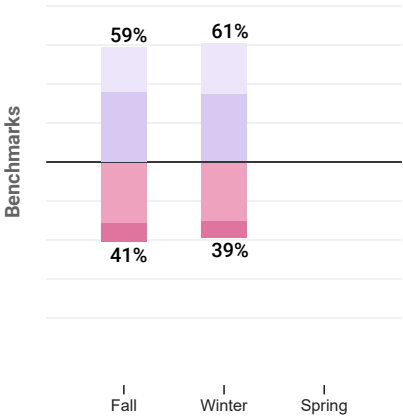
VENTURE HIGH SCHOOL

NO DATA TO COMPARE



WOODLAND MIDDLE SCHOOL

NO DATA TO COMPARE

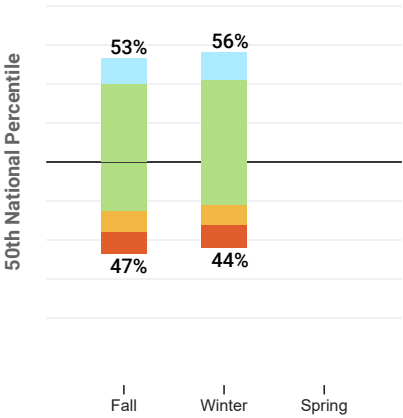


Group of Students	Benchmark	Fall 2021		Winter 2021		Spring 2021		Change of Students	
		% Students		% Students		% Students			
District	COLLEGE_PATHWAY	29	1266	30	1382	0	0	-29%	-1266
	LOW_RISK	36	1566	37	1661	0	0	-36%	-1566
	SOME_RISK	28	1194	25	1133	0	0	-28%	-1194
	HIGH_RISK	7	319	8	353	0	0	-7%	-319
Canfield Middle School	COLLEGE_PATHWAY	29	197	35	246	0	0	-29%	-197
	LOW_RISK	39	260	36	256	0	0	-39%	-260
	SOME_RISK	25	171	23	165	0	0	-25%	-171
	HIGH_RISK	7	48	6	43	0	0	-7%	-48
Coeur d'Alene High School	COLLEGE_PATHWAY	38	443	36	409	0	0	-38%	-443
	LOW_RISK	36	412	39	439	0	0	-36%	-412
	SOME_RISK	22	258	20	232	0	0	-22%	-258
	HIGH_RISK	4	46	5	60	0	0	-4%	-46
Lake City High School	COLLEGE_PATHWAY	31	338	33	384	0	0	-31%	-338
	LOW_RISK	36	399	39	459	0	0	-36%	-399
	SOME_RISK	27	301	21	253	0	0	-27%	-301
	HIGH_RISK	6	66	7	80	0	0	-6%	-66
Lakes Middle School	COLLEGE_PATHWAY	20	101	21	116	0	0	-20%	-101
	LOW_RISK	33	168	33	179	0	0	-33%	-168
	SOME_RISK	34	172	33	178	0	0	-34%	-172
	HIGH_RISK	13	66	13	74	0	0	-13%	-66
Venture High School	COLLEGE_PATHWAY	5	5	2	2	0	0	-5%	-5
	LOW_RISK	39	38	33	34	0	0	-39%	-38
	SOME_RISK	42	41	47	48	0	0	-42%	-41
	HIGH_RISK	14	14	18	19	0	0	-14%	-14

Group of Students	Benchmark	Fall 2021		Winter 2021		Spring 2021		Change of Students	
		%	Students	%	Students	%	Students		
Woodland Middle School	COLLEGE_PATHWAY	23	181	26	224	0	0	-23%	-181
	LOW_RISK	36	289	35	294	0	0	-36%	-289
	SOME_RISK	31	251	30	257	0	0	-31%	-251
	HIGH_RISK	10	79	9	77	0	0	-10%	-79

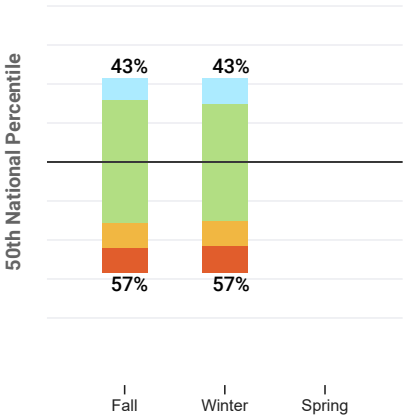
DISTRICT

NO DATA TO COMPARE



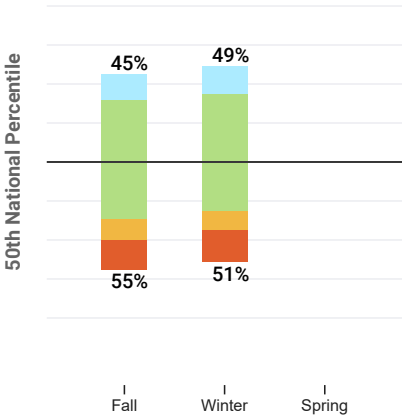
SIX

NO DATA TO COMPARE



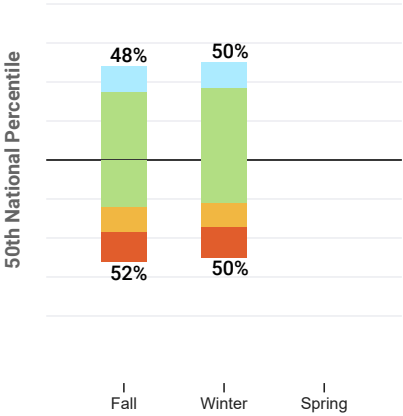
SEVEN

NO DATA TO COMPARE



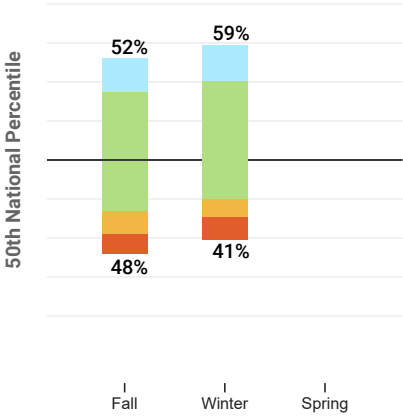
EIGHT

NO DATA TO COMPARE



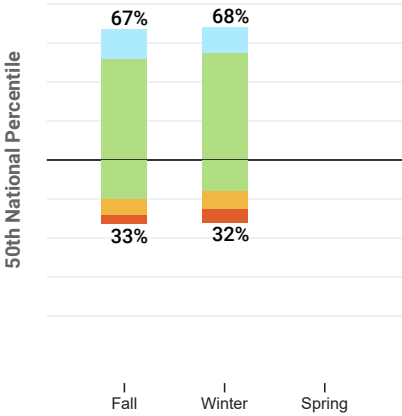
NINE

NO DATA TO COMPARE



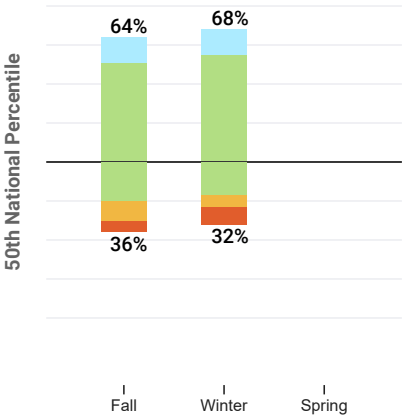
TEN

NO DATA TO COMPARE



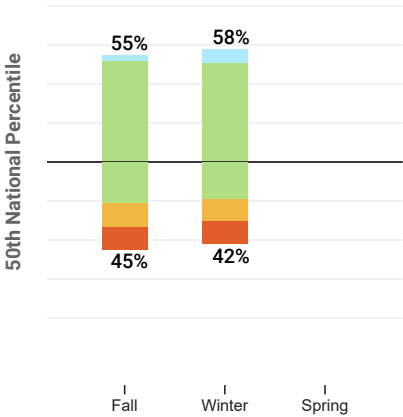
ELEVEN

NO DATA TO COMPARE



TWELVE

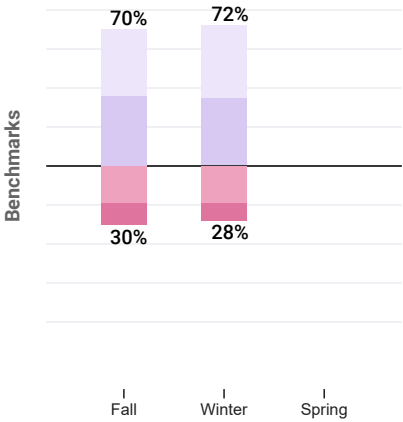
NO DATA TO COMPARE



Group of Students	Percentile	Fall 2021		Winter 2021		Spring 2021		Change	
		%	Students	%	Students	%	Students	of Students	
Eleven	85-99th percentile	13	72	13	69	0	0	-13%	-72
	30-84th percentile	71	394	72	389	0	0	-71%	-394
	20-29th percentile	10	57	6	36	0	0	-10%	-57
	1-19th percentile	6	34	9	47	0	0	-6%	-34
Twelve	85-99th percentile	3	10	7	26	0	0	-3%	-10
	30-84th percentile	73	235	70	258	0	0	-73%	-235
	20-29th percentile	12	38	11	41	0	0	-12%	-38
	1-19th percentile	12	39	12	43	0	0	-12%	-39

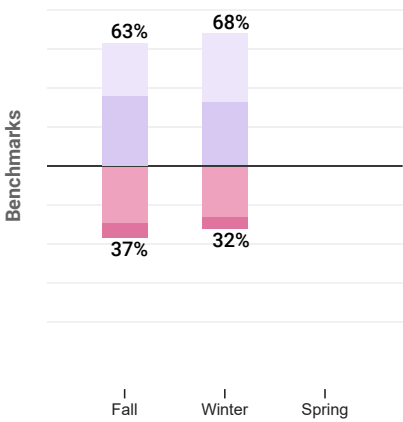
DISTRICT

NO DATA TO COMPARE



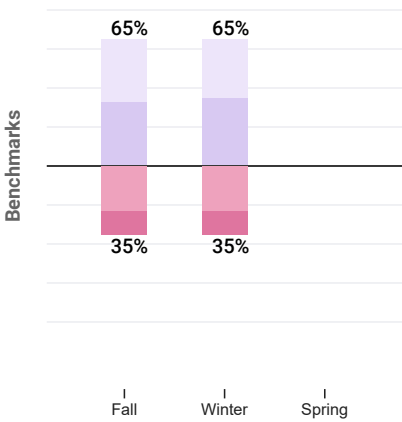
SIX

NO DATA TO COMPARE



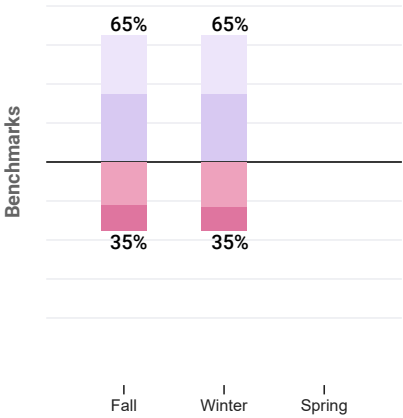
SEVEN

NO DATA TO COMPARE



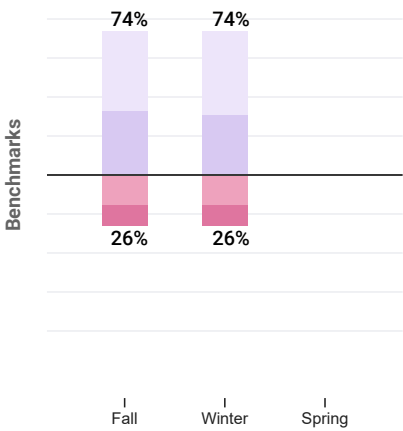
EIGHT

NO DATA TO COMPARE



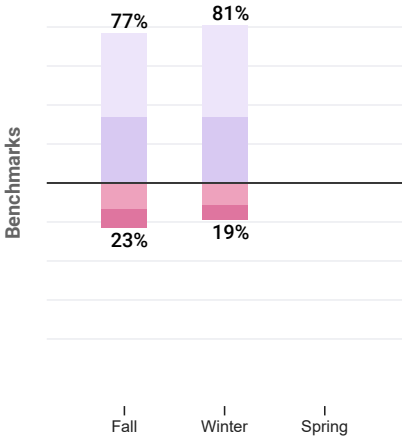
NINE

NO DATA TO COMPARE



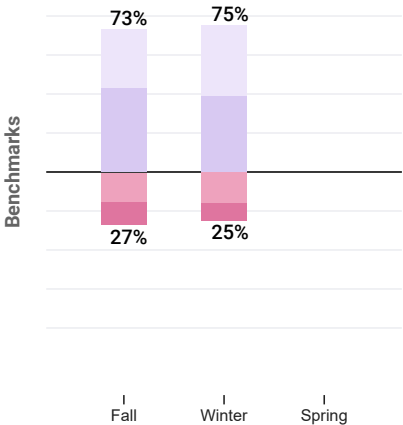
TEN

NO DATA TO COMPARE



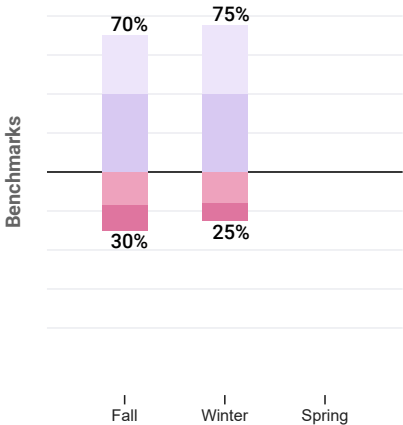
ELEVEN

NO DATA TO COMPARE



TWELVE

NO DATA TO COMPARE

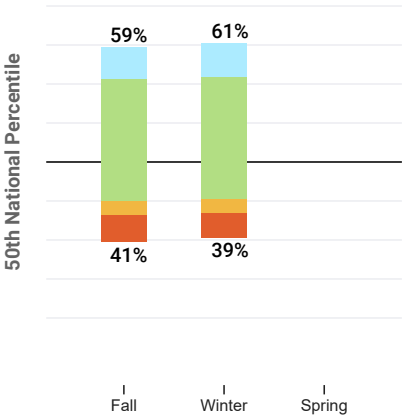


Group of Students	Benchmark	Fall 2021		Winter 2021		Spring 2021		Change	
		%	Students	%	Students	% Students		of Students	
District	COLLEGE_PATHWAY	34	1486	37	1720	0	0	-34%	-1486
	LOW_RISK	36	1565	35	1615	0	0	-36%	-1565
	SOME_RISK	19	835	19	874	0	0	-19%	-835
	HIGH_RISK	11	488	9	449	0	0	-11%	-488
Six	COLLEGE_PATHWAY	27	179	35	252	0	0	-27%	-179
	LOW_RISK	36	242	33	231	0	0	-36%	-242
	SOME_RISK	29	193	26	182	0	0	-29%	-193
	HIGH_RISK	8	52	6	44	0	0	-8%	-52
Seven	COLLEGE_PATHWAY	32	214	30	212	0	0	-32%	-214
	LOW_RISK	33	216	35	250	0	0	-33%	-216
	SOME_RISK	23	154	23	164	0	0	-23%	-154
	HIGH_RISK	12	77	12	81	0	0	-12%	-77
Eight	COLLEGE_PATHWAY	30	203	30	222	0	0	-30%	-203
	LOW_RISK	35	239	35	252	0	0	-35%	-239
	SOME_RISK	22	145	23	169	0	0	-22%	-145
	HIGH_RISK	13	87	12	86	0	0	-13%	-87
Nine	COLLEGE_PATHWAY	41	328	43	336	0	0	-41%	-328
	LOW_RISK	33	262	31	237	0	0	-33%	-262
	SOME_RISK	15	120	15	120	0	0	-15%	-120
	HIGH_RISK	11	90	11	85	0	0	-11%	-90
Ten	COLLEGE_PATHWAY	43	296	47	330	0	0	-43%	-296
	LOW_RISK	34	236	34	239	0	0	-34%	-236
	SOME_RISK	13	86	11	77	0	0	-13%	-86
	HIGH_RISK	10	70	8	58	0	0	-10%	-70

Group of Students	Benchmark	Fall 2021		Winter 2021		Spring 2021		Change of Students	
		%	Students	%	Students	%	Students		
Eleven	COLLEGE_PATHWAY	30	141	36	212	0	0	-30%	-141
	LOW_RISK	43	202	39	225	0	0	-43%	-202
	SOME_RISK	15	68	16	91	0	0	-15%	-68
	HIGH_RISK	12	57	9	55	0	0	-12%	-57
Twelve	COLLEGE_PATHWAY	30	125	35	156	0	0	-30%	-125
	LOW_RISK	40	168	40	181	0	0	-40%	-168
	SOME_RISK	17	69	16	71	0	0	-17%	-69
	HIGH_RISK	13	55	9	40	0	0	-13%	-55

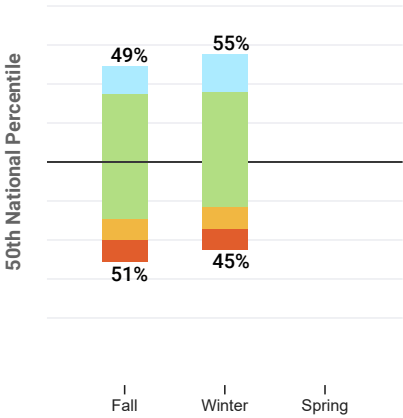
DISTRICT

NO DATA TO COMPARE



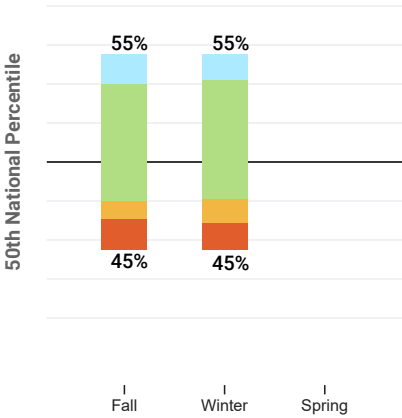
SIX

NO DATA TO COMPARE



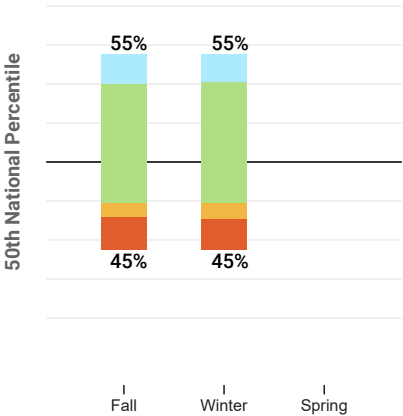
SEVEN

NO DATA TO COMPARE



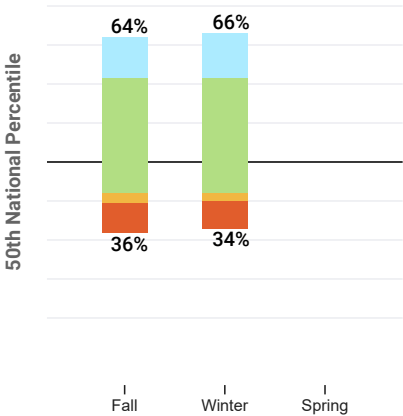
EIGHT

NO DATA TO COMPARE



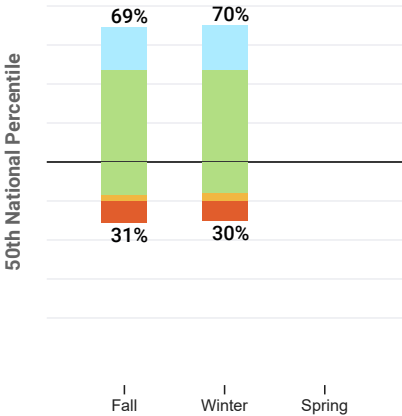
NINE

NO DATA TO COMPARE



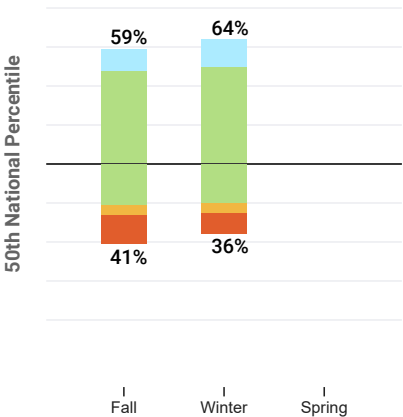
TEN

NO DATA TO COMPARE



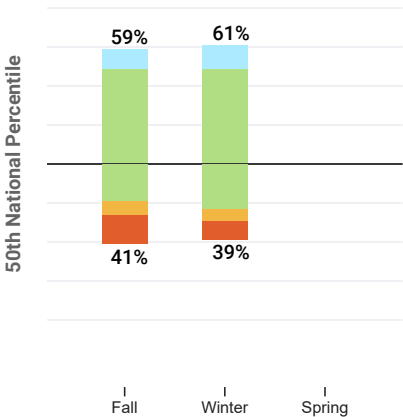
ELEVEN

NO DATA TO COMPARE

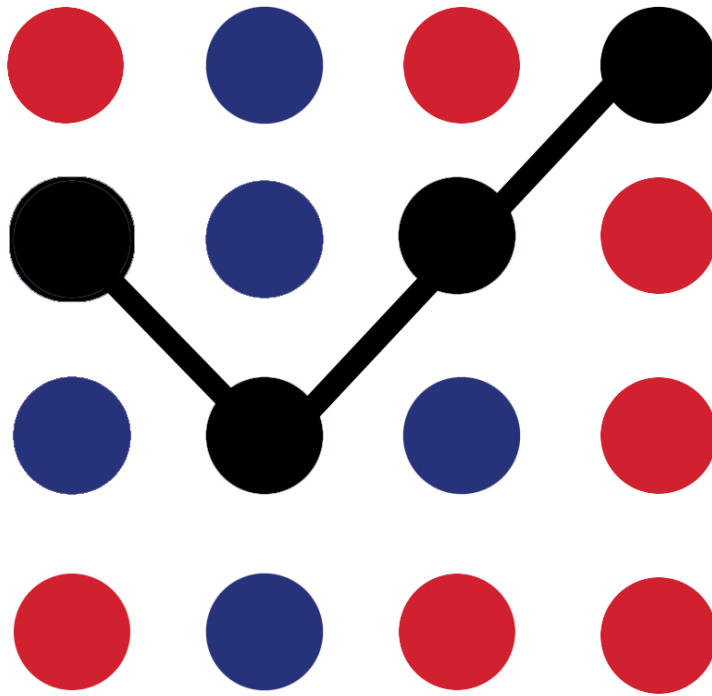


TWELVE

NO DATA TO COMPARE



Group of Students	Percentile	Fall 2021		Winter 2021		Spring 2021		Change	
		%	Students	%	Students	%	Students	of Students	
Eleven	85-99th percentile	11	54	14	78	0	0	-11%	-54
	30-84th percentile	69	321	70	410	0	0	-69%	-321
	20-29th percentile	5	24	5	29	0	0	-5%	-24
	1-19th percentile	15	69	11	66	0	0	-15%	-69
Twelve	85-99th percentile	10	42	12	52	0	0	-10%	-42
	30-84th percentile	68	284	72	323	0	0	-68%	-284
	20-29th percentile	7	27	6	26	0	0	-7%	-27
	1-19th percentile	15	64	10	47	0	0	-15%	-64



ASSESSMENT & SYSTEM PERFORMANCE



Results in aggregate are posted to
MyCDASchools > Assessments and on the District
Website > www.cdaschools.org > Assessments